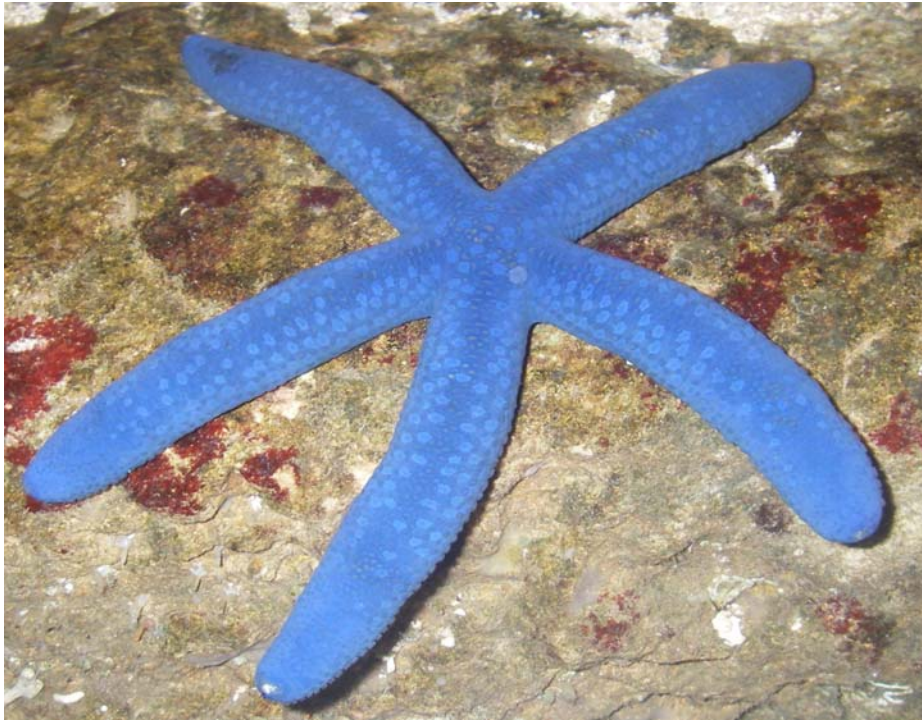


## BLUE SEA STAR



**GROUP/PHYLUM:** Echinoderm

**COLOUR:** Camouflage – colour blue to hide in blue waters

**MOVEMENT:** Moves and clings to rocks using thousands of tube feet. Suckers on tube feet activated by water pumping through body

**TEXTURE:** Rough – Hard – Tough - Leathery

**SHAPE:** Star – 5 cylindrical arms  
Eye on each arm that can only see dark and light

**HOW IT EATS:** Mouth in centre of body on the underside  
It pushes its stomach outside body and absorbs food across – when finished sucks stomach back in

**WHAT IT EATS:** Algae – shellfish- dead animals – other seastars

**JOB:** Cleaning the ocean floor

A sea star that is dangerous to touch is the Crown of Thorns – it has venomous spines