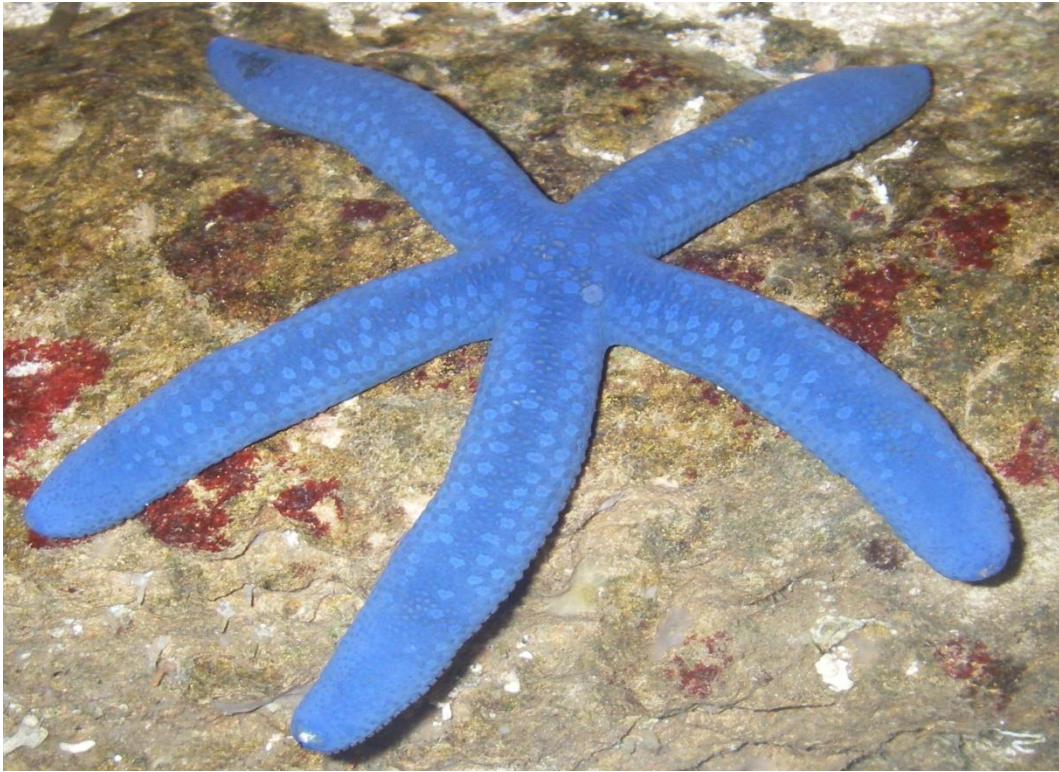


BLUE SEA STAR



GROUP/PHYLUM: Echinoderm

COLOUR: Camouflage – hide in Tropical Coral Reef & blue waters

MOVEMENT: Moves and clings to rocks using thousands of tube feet; suckers on tube feet activated by water pumping through body (Water Vascular System)

TEXTURE: Rough – Hard – Tough - Leathery

SHAPE: Star – 5 cylindrical arms
Eye spot on each arm that can only light and dark

HOW IT EATS: Mouth in centre of body on the underside
It pushes its stomach outside body and absorbs food across – when finished sucks stomach back in

WHAT IT EATS: Algae – shellfish- dead animals – other seastars

JOB: Cleaning the ocean floor

***A dangerous sea star to touch is the *Crown of Thorns* – venomous spines!**